



Wattle Park Kindergarten Information for Families 2019

2a Yeltana Avenue
Wattle Park, SA, 5066.
Telephone: 8331 3619
Mobile: 0428859479

Email us at: dl.4610.leaders@schools.sa.edu.au
Visit our website at: www.wattlepkkgn.sa.edu.au



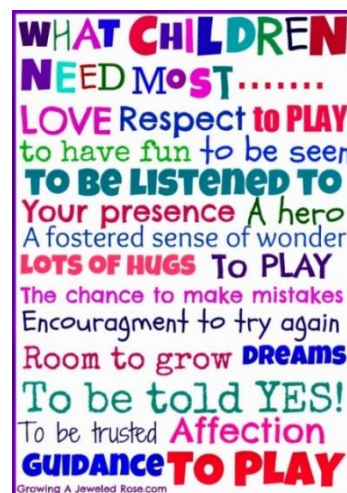
Government of South Australia
Department for Education

WELCOME!

Welcome to Wattle Park Kindergarten. We're sure the time your family spends with us will be of benefit to all. We know parents are the most powerful educators of their children and worthwhile learning occurs when home and kindergarten cooperate with and support each other.

Your family may have skills or interests like gardening, cooking, craft, music, working with children or administration which you'd like to share. You're very welcome to participate in any way you feel comfortable - by joining in, you'll enrich our educational program. We are a small kindergarten with a community focus. We look forward to your contribution!

Please know that we are a nut-aware site. This means no nuts, nutella, or nut bars. Our policy on this is available to all families, in the white policy folder on the white shelves by the front door.



The approved education provider is the Department of Education. We underwent stringent National Accreditation in 2015 and were awarded with an overall rating of "Exceeding National Standards."

This is our philosophy. It continually evolves in consultation with children, staff, Governing Council & families. Feedback is always welcome.

Wattle Park Kindergarten Philosophy Statement

(This is currently being updated and the process will include the 2019 families)

Wattle Park Kindergarten is a contemporary Australian preschool, awarded the highest rating of National Quality Standards. We are nestled into the foothills of suburban Wattle Park. We honour our ongoing connection with the Kurna people and the more recent association with the Penfold family.

Our site is purely focused on supporting the development of children in their early years. Our educators incorporate aspects of many education-based theories and philosophies. These include developing a sense of belonging and wellbeing; learning through play; playing alone and with others; and developing at one's own pace in connection with the rhythms of the natural world.

Our kindergarten inspires curiosity, creativity and a sense of wonder. Educators and families nurture children's holistic growth, interdependence and independence. The flowing environment supports children to feel safe and invites them to explore and play, nourishing all of the senses. We embrace and celebrate multiculturalism and strongly value family involvement. We work together to foster happiness and resilience in our little learners who enjoy being involved in their kindergarten.



2019 KINDERGARTEN SESSIONS:

Group A: Tuesday and Wednesday

8.15am – 3.45pm

Group B: Thursday and Friday

8.15am – 3.45pm

ENROLMENT: Since 2014 there has been strictly one intake each year (Term 1). Children turning 4 on or before April 30 of the kindy year will start in term 1 of that year. Any child turning 4 on or after May 1 must start Kindergarten the following year.

PROOF OF BIRTH DATE AND IMMUNISATIONS ARE NOW REQUIRED AT ENROLMENT.

Early Entry: Early admission or extension of time is negotiable and may be offered to children with additional needs, such as developmental delays, family and social circumstances or health/medical conditions. Early admission will only occur following full consultation and agreement between families, the Director, Department of Education and/or others, and where space allows.

Special Needs including Bilingual Programs are staffed as required. Support may be available from some specialist staff to meet children's and families' individual needs. Free services can include speech therapy, child psychology, special education assistance and behaviour support. Please speak to the Director if you feel your child would benefit from extra support in any area.

Playgroup: Monday: 9.30 - 11.00 am.

Our playgroup is held every Monday. It offers a variety of fun craft, musical and play activities and is a lovely way for families to get to know the kindy and other families. All children (birth to 5 years), parents and carers are welcome. Please bring a piece of fruit and water for your child. \$5.00 per family. Playgroup operates during school term. It does not run on public holidays, nor on the first week of any term.

Education Program

Our curriculum is based on the National Early Years Learning Framework. It's called "Belonging, Being and Becoming":

BELONGING - *Feeling connected in key relationships.*

BEING - *Immersion in the here & now of relationships, interests & daily events.*

BECOMING - *Changing and growing in understandings, skills and possibilities.*

The program aims for learning outcomes across these 3 areas. During your child's time at Kindergarten we will support your child to:

- 1. have a strong sense of wellbeing**
- 2. develop a strong sense of identity;**
- 3. be increasingly connected with and contribute to their world;**
- 4. be an effective communicator; and**
- 5. be a confident and involved learner.**

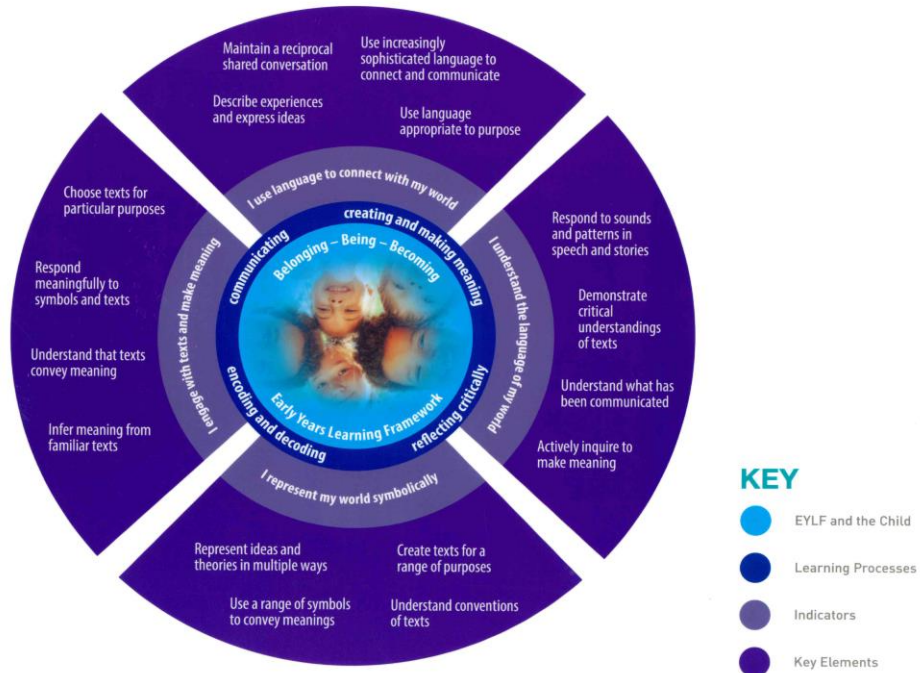


These are the 5 key outcomes of the above Early Years Learning Framework curriculum.

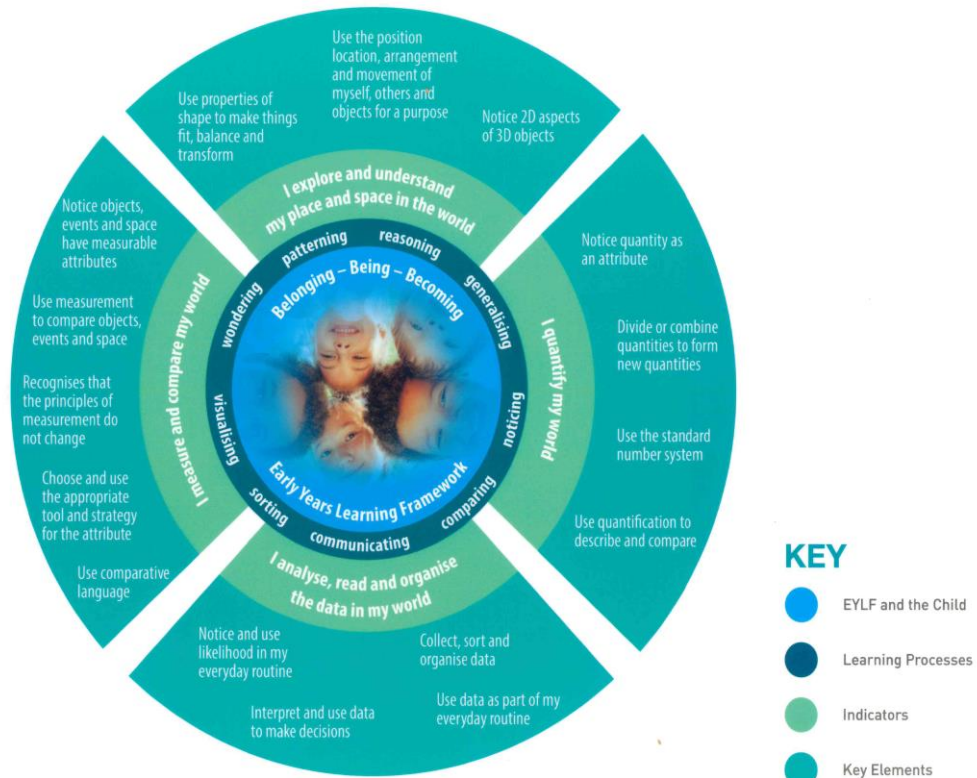


We also use the **Preschool Literacy and Numeracy Indicators** to assess, plan and report. This provides more detail to families about Numeracy and Literacy at Kindergarten.

Literacy chart



Numeracy chart



We know children learn best through play, discovery and imagining.

As educators we constantly reflect on our practice, practice of others, and research to improve learning outcomes, children's enjoyment, quality, equity and wellbeing. We base our beliefs on this reflection and observation of children and our staff team works regularly on these principles.



We respect and celebrate different ways of seeing, knowing and living and we **honour the importance of links with family, culture and community**. Our program focuses on learning experiences which foster development of **social skills and life competencies**. To meet children's individual needs, we collaborate with them and their families to develop experiences that are **age- and stage-appropriate**. We enjoy connections with our local community and value our neighbourhood walks as part of our educational program. The permission slip, included in the enrolment pack, must be signed for your child to be included in these walks. We strongly support children's development of oral language as we know this is a precursor to strength in Literacy. We promote opportunities for informal conversations ("Strive for 5") and more formal presentations by children, eg "Show and Tell" during the year. We use technology to record and deepen children's learning. Children access technology to support oral language, memory, sequencing of events and other skills. Children's Wellbeing and Numeracy are key foci points for our educators. Your feedback and involvement in our learning program is valued.

Individual Learning Journal – Each child will help their educators to develop their own Learning Journal. It provides evidence of what your child knows, can do and understands through samples of drawing, writing and photographs. Educators assess each child and comment on observations, achievements and challenges. It shows outcomes achieved in line with the curriculum and dispositions your child shows including confidence, creativity, interdependence and independence. Please write your own comments in your child's portfolio. You can access your child's portfolio at any time and they will be sent home each term.

Wattle Park Kindergarten Daily Schedule

We acknowledge, when having "free play" at kindy, children are making choices, building social relationships and skills, sharing, taking turns and doing lots of communicating. To promote this learning we aim to maintain uninterrupted, supported free play for most of the day. Educators are always present to direct, facilitate, scaffold and observe play. Educators are always involved with children and take opportunities to 'teach' and question in supportive ways during play.

Flow of the Day

8.15am:	Doors are open for both inside and outside experiences.
9.30am:	Suggested Morning Meeting
10:00 am:	Suggested Snack time
11.30am:	Suggested Focus Groups and Lunch
12:30-12.45pm:	Quiet activities – inside
12.45pm:	Doors are open for both inside and outside experiences.
2.30pm:	Suggested Afternoon Tea time
3.15pm:	Inside ready for end of the day.



What to Bring to Kindy

- A **named** bag.
- A **named** water bottle (water only).
- A change of clothes – appropriate to the season and **including socks & underwear**.
- Morning Tea, lunch and afternoon tea. We promote 'Nude Food' and all rubbish other than food scraps and recycling containers will be sent home. Please refer to our Healthy Eating Policy.
- Please do not send any foods that contain any NUTS. We have a strict NO NUT policy.
- We cannot refrigerate lunches so use a freezer pack if you are concerned.
- **Water** - We only allow water to be consumed at Kindy. Staff will refill bottles or cups with water at any time. We encourage drinking water throughout the day.
- A box of tissues to donate at the start of the year.

What the kindy will supply:

- Sunscreen
- Water container and cups, if your child has forgotten their drink bottle.
- Hat and T-shirt - invoiced in Term one \$30

Birthdays -: We discourage bringing cakes in line with the above policy. You are welcome to bring fruit skewers or watermelon cake. (half a watermelon)

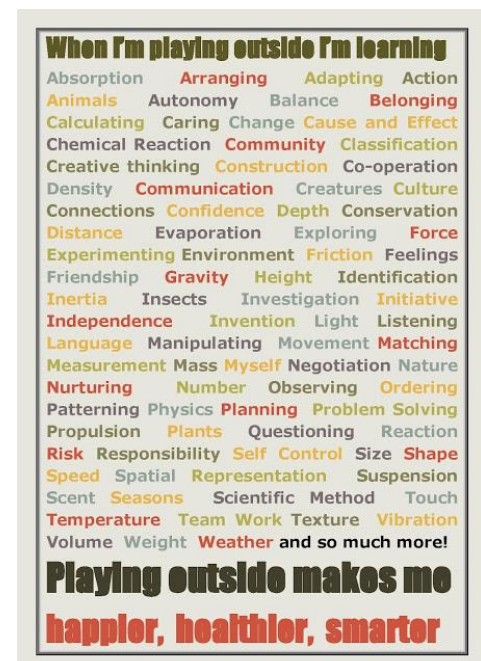
Toys & Jewellery - Please don't allow your child to bring their own toys or jewellery to kindergarten because they could get lost or broken.

Clothing and Footwear

Children's learning opportunities can be enhanced or limited by the clothes they wear. Please dress your child in clothes which can get messy and don't restrict movements when climbing and can be independently managed when toileting. Your child should wear shoes or sandals, not thongs or crocs. Clothing should always cover shoulders eg no singlet dresses or singlets. Parents need to apply sunscreen at home or on arrival at Kindergarten from April to September. Staff will re-apply during the day. **Please name all clothes and other items and pack spare clothes (including underwear) in your child's bag** - let your child/ren know the clothes are there if they need them.

To help your child play outside, you are welcome to bring a named pair of gumboots. We ask that a complete change of clothes are always available in their bag. We celebrate the seasons and develop our understanding through hands-on experiences. In summer we often have bare feet so we can experience through all of our senses. As we often play with water and mud your child will need a complete change of clothes so they can change if they need to.

We anticipate children will be toilet trained and be able to wipe their own bottom unless there are medical issues. Staff are available to guide children but not do it for them. Please ask if you need help with ideas for training. Please pack spare clothes including socks in case of accidents.



On Arrival –

1. Your child can ‘have a go’ at writing their name. We focus on name recognition, pencil grip, making an attempt and a developing understanding that print has meaning. **We do not focus on being able to write their name in a legible way as they are usually just beginning to ‘write’.**
2. Children then need to put their bag on a hook on the veranda.
3. Their named drink bottle goes onto the cream coloured trolley.

We ask that your child does these tasks independently to promote self-confidence and help them remember where their things are.

Parents and/or caregivers MUST enter the kindy to deliver and collect children. Please sign your child in and out each day. No child will be permitted to leave the Centre until the parent or caregiver has arrived and the child has been farewelled by staff. Children will only be released to people you have authorised on your child's enrolment form.

Rosters - Your name will be included on the washing roster. You will be asked to help in a variety of other ways such as fundraising BBQ's, working bees and other events. Your help helps develop our sense of community, takes pressure off staff, saves the kindergarten money, raises funds for the Kindergarten and is greatly appreciated. □

Governing Council - Governing Council consists of interested parents and staff who work together to effectively manage the kindergarten. We meet twice per term at kindy (Weeks 3 & 7) to discuss the educational program, funds, fundraising, maintenance, community needs and more. Everyone is welcome to attend; it is a great way of meeting other parents and have an active role in decision making. Please talk to staff if you are interested.

Communication

We aim to support families to assist children to achieve their full potential while at kindergarten. We do this by regularly discussing your child's progress with you. We encourage you to discuss any concerns with us as they arise. Staff are available for quick chats between 8.15 am and 3.45 pm. If you'd like to discuss important issues that may take longer please make an appointment for another time to meet or telephone. You're welcome to telephone to check your child has settled if you're worried.

- Your child will have a child's file located on the cupboard near the door. It is labelled with your child's name. Please check this each day for any notes.
- Regular **newsletters** will be emailed. If you prefer a paper copy it can be collected from the sign in table. It will also be displayed on the pin board by the sign in table.
- We have a **noticeboard** displaying information for your interest.
- Our program will be documented and emailed home fortnightly, a copy of this will be kept in the folder on the cupboard near the door.
- A written **exit report** ("Statement of Learning") and learning portfolio of children's achievements are provided for each child when they leave kindergarten to attend school.
- Text messages from Kindy mobile.
- Facebook page.
- **Feedback** is always welcome from children and families about all issues. We value diversity in backgrounds and culture so please share some of your family traditions and celebrations with us so we can celebrate with you.
- We hope you feel comfortable to discuss any ideas with staff or you can ring or email anytime.



Children's Behaviour

Children are supported to engage with each other and staff in a friendly, sociable way. At 4 years of age children are undergoing great changes in themselves and in relation to others. Skills are constantly developing. Staff support children to act with care for themselves, others and kindergarten property. Should a child need to move from an area or from other children they will be supported to do this and have "time in" with a staff member. They will have the time to calm so they can think about what has happened and how people (including themselves) have been affected. They will have the opportunity to make amends if this is deemed important by themselves, staff or other children. Staff encourage children to make positive choices at every opportunity and praise them for doing so. Please see the Director immediately if you have any concerns about the behaviour of your child, another child, another adult, the policy or staff actions at our centre. Please ensure confidentiality, especially in front of children. Please see the Policy folder for further information about supporting children's behaviours.

Sick Children - Please do not send sick children to kindy, as staff and other children can become ill as a result. If your child becomes ill at kindy staff ring parents first, then the people on your emergency contact list. Please contact kindy asap when you know your child will not be attending. Leave a message on the kindy landline the night before if it's easier or text the kindy mobile.

PLEASE MAKE SURE YOU UPDATE CHANGES IN CONTACT INFORMATION FOR YOUR FAMILY AND EMERGENCY CONTACTS. In an emergency we will ring the Ambulance first.

Emergency Management We regularly practice emergency drills. The plan is explained at our first Family Information meeting (at Pre Entry) and is available in the Policy folder on the white shelf by the front door.

Term Account Notices (parent contribution to costs) are put in your child's file at the beginning of each term. Parents experiencing difficulty in paying their child's account are respectfully asked to discuss this confidentially with the Director. **Please pay your account in the first 2 weeks of term.** When paying by Electronic Funds Transfer you'll need to make sure your child's name is in the 'details section'. 2019 accounts are \$200 per term. You can pay for the year in term 1 (\$760) if you prefer. Parent contribution is vital for effective running of the kindergarten. Please Note term 1 invoice will include a hat and t-shirt fee.

Bank SA: BSB 105900, Account No 9511 32140

School enrolment

Our children go to a great range of primary schools. School enrolment is parents' responsibility and we recommend children be enrolled approximately six months before they are due to start school. Please ask us if you have any questions.

Term dates - government preschools and schools

2019

29 Jan – 12 Apr

29 April – 5 Jul

22 Jul – 27 Sep

14 Oct – 13 Dec

